

## Press information

# Zumtobel gives efficiency the green light in a pioneering new VW Group factory

**Innovative LED lighting solutions from Zumtobel help establish the new Volkswagen Crafter commercial vehicle plant in Poland as one of the most efficient factories in the VW Group.**

*Dornbirn, 15 February 2018* – Volkswagen Commercial Vehicles opened a new production plant in the Polish city of Wrzesnia at the end of October 2016. The factory manufactures the latest generation of the Volkswagen Crafter and the similar TGE model from MAN. The site, which covers an area of around 220 hectares, has the capacity to produce up to 100,000 vehicles per year and incorporates a modern paint shop and halls for bodywork construction and assembly, as well as a supplier park with logistics operations. Thanks to an innovative full LED solution from [Zumtobel](#), the factory has established itself as a leader in lighting efficiency within the VW Group.

## **Zumtobel supports the “Think Blue-Factory” concept**

Zumtobel was awarded the contract for this major project in Wrzesnia in 2015 following the submission of a detailed lighting concept. Alongside luminaires and controls for the assembly and production halls, the complete solution includes efficient lighting for the offices, high-bay storage facilities and outdoor areas. Safety lighting also represented a key cornerstone of the project. Zumtobel was in close contact with specialist planners from [Volkswagen Commercial Vehicles](#) throughout the implementation phase, helping the Austrian lighting solutions supplier to precisely fulfil the specific requirements of the client. Initial Volkswagen planning was based largely around conventional lighting, but efficiency calculations and the technological progress of LED technology at Zumtobel soon convinced the planners to realise the entire project with LED. The decision prompted VW to classify the new production facility as a “Think Blue-Factory”. This programme is designed to encourage plants to use resources more efficiently, reducing emissions and energy usage while minimising both water consumption and waste. “We are delighted that Volkswagen Commercial Vehicles has opted for a complete LED approach. Together we have been able to create one of the most efficient production plants in the VW Group in terms of lighting,” explained Frank Oevermann, Key Account Manager Automotive at Zumtobel. Matthias Strutz, Electrical Power Supply Planning at Volkswagen in Wolfsburg, added: “The new factory represents a clear statement in terms of environmental protection. We are really benefitting from the decision to use only LED – both ecologically and economically. LED solutions extend the service life and cut maintenance and operating costs, while at the same time ensuring a constant lighting intensity over the entire service life.”

## Lighting solution in detail

The largest part of the project is taken care of by the [TECTON](#) continuous-row system, which reduces energy consumption by 50 percent compared to T16 trunking. A total of 16,000 TECTON C LED luminaires are installed over a length of around 40 kilometres. This continuous-row luminaire is optimised for a variety of different racking and surface lighting tasks, providing the perfect solution for the dedicated Volkswagen Crafter manufacturing and assembly facilities. The current conducting section is mounted in the TECTON trunking, enabling the versatile rail to offer seamless functions such as power supply, lighting controls and connection to the emergency lighting network. The [CRAFT](#) high-bay fitting used by Zumtobel in the paint shop and higher halls can be quickly and easily installed on the TECTON system. Based on 15,000 continuous-row 40W LED luminaires and 6000 operating hours, Volkswagen Commercial Vehicles is now saving 3420 megawatt hours (MWh) and 1920 tonnes of carbon dioxide (CO<sup>2</sup>) each year at the Polish plant.

The offices feature the recessed [MIREL evolution](#) luminaire and the [PANOS](#) downlight series, which ensure uniform illumination of the working areas and create precise accents that accentuate the interior architecture.

R2L2 LED lanterns and ForceLED fittings from [Thorn](#) light the car park and exterior façade. The high-performance optics utilised in the R2L2 street lantern offer excellent energy efficiency and a choice of distributions for precise light control without wasteful stray light. The compact, dust-tight and moisture-proof ForceLED solution incorporates an aluminium housing for added resistance and supplements the general exterior illumination of the building with pleasant accents.

The [ONLITE RESCLITE](#) from Zumtobel has been trusted to highlight the escape routes. In line with EN 1838, the luminaire provides the necessary orientation in the event of an emergency and also offers anti-panic lighting. The emergency lighting is monitored by LITECOM, a lighting management solution from [Zumtobel Group Services](#) (ZGS).

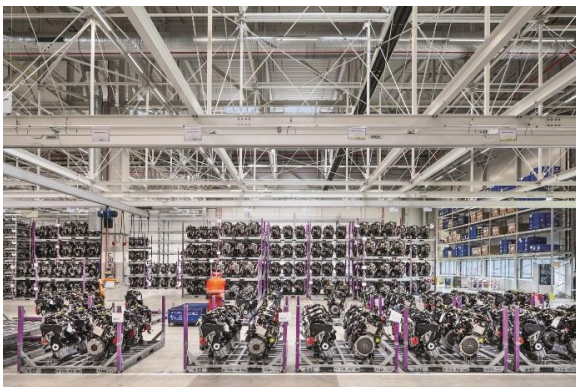
Additional lighting tasks are carried out by products from Zumtobel's [PERLUCE](#) and [ONDARIA](#) series and the Thorn Satin range, alongside the KXA-2 and KXB explosion-proof linear luminaires. As a technology partner, [Tridonic](#) has supplied component solutions such as drivers and LED light sources for the luminaires. A specific Constant Light Output (CLO) setting was configured for the entire luminaire installation during the manufacturing stage. The CLO function, which is now standard for all industrial luminaires used by Volkswagen, ensures a uniform reduction in the luminous flux over the stated lifetime.

**Photo captions:**

(Photo credits: Zumtobel / Photographer: Henning Moser)



**Photo 1:** Volkswagen Commercial Vehicles manufactures the latest generation of the VW Crafter and the similar TGE model from MAN at the factory in the Polish city of Wrzesnia. The plant covers an area of around 220 hectares and has the capacity to produce up to 100,000 vehicles per year.



**Photo 2:** A total of 16,000 TECTON luminaires are installed in the factory on trunking that covers a distance of around 40 kilometres.



**Photo 3:** The CRAFT L high-bay solution is installed in the paint shop and higher halls.



**Photo 4:** Based on 15,000 continuous-row 40W LED luminaires and 6000 operating hours, Volkswagen Commercial Vehicles is now saving 3420 MWh and 1920 tonnes of CO<sup>2</sup> each year at the factory in Poland.



**Photo 5:** A full LED solution has helped establish the factory as the worldwide most efficient building in the Volkswagen Group.

**Press contact:**

Zumtobel Lighting GmbH  
Kiki McGowan  
Head of Brand Communications  
Schweizer Strasse 30  
6850 Dornbirn

Tel: +43 5572 390 50313  
[kiki.mcgowan@zumtobelgroup.com](mailto:kiki.mcgowan@zumtobelgroup.com)  
[www.zumtobel.com](http://www.zumtobel.com)

Zumtobel Lighting GmbH  
Andreas Reimann  
Brand PR Manager  
Schweizer Strasse 30  
6850 Dornbirn

Tel: +43 5572 390 26522  
[andreas.reimann@zumtobelgroup.com](mailto:andreas.reimann@zumtobelgroup.com)  
[www.zumtobel.com](http://www.zumtobel.com)

ZG Lighting (UK) Limited  
Jennifer Sewell  
Marketing Communications Manager  
Chiltern Park, Chiltern Hill  
Chalfont St Peter  
Buckinghamshire SL9 9FG

Phone: +44 0 7785 232 294  
[jennifer.sewell@zumtobelgroup.com](mailto:jennifer.sewell@zumtobelgroup.com)  
[www.zumtobel.com](http://www.zumtobel.com)

**About Zumtobel**

We are passionate about designing and producing the highest quality of light. Our work is driven by the knowledge that the right light can create the right environment for people to thrive when tailored to their individual needs. Guided by a unique design approach, we continuously push our boundaries in search for perfection through unique and timeless design. As we develop the next generation of lighting, we build on our family heritage to refine the aesthetics of light and shape the lighting of tomorrow. With a special blend of passion, grace and avant-garde ideas, we turn light into an experience and remain committed to the goal of improving the quality of life through light. Zumtobel is a brand of the Zumtobel Group AG with its headquarter in Dornbirn, Vorarlberg (Austria).

**Zumtobel. The Light.**